

**DOROTHEA
HOTEL**



Dorothea Hotel, Budapest, Autograph Collection

Inspired by the captivating lives of Archduchess Dorothea and Palatine Joseph in 19th century Budapest, Dorothea Hotel seamlessly blends the vibrant energy of a modern-day metropolis with the city's timeless splendor. Set in three magnificent buildings built in three different eras, the hotel embarks on a journey of discovery through time in the world of refined luxury and contemporary design curated by the renowned Italian architect and designer, Piero Lissoni.

Location

Situated in the center of Budapest, only moments from the majestic Danube, historic sights and cultural gems, Dorothea Hotel thrives in the beating heart of the city.

Address: 1051 Budapest, Dorottya utca 2.

ROOMS



[Click for 3D](#)

Atrium Twin & King

63 rooms on the first six floors of the hotel with a balcony and view to Pavilion Restaurant & Bar

Room size: 28-37 m²

Bed: twin - 120x200 cm or king - 180x200 cm

Room facilities: walk-in rain shower, smart TV, Nespresso machine, unlimited still and sparkling water, Botaniq toiletries, bathrobe, hairdryer, slippers, safe, iron, ironing board, minibar

Contemporary Twin

9 rooms on the sixth floor of the hotel with a street view

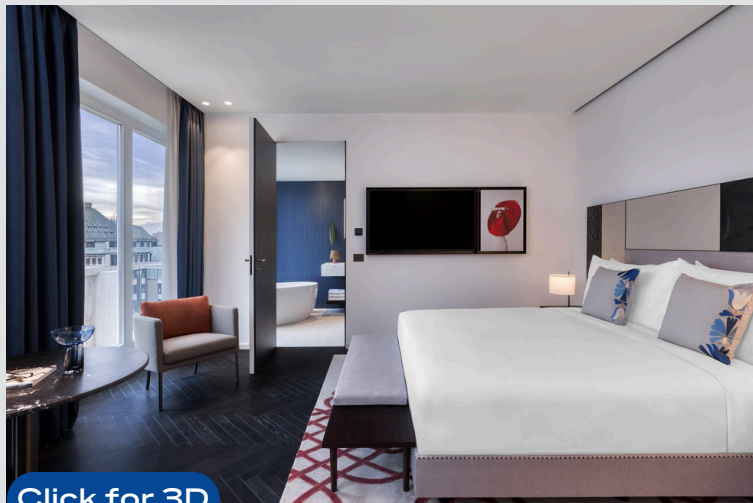
Room size: 28-32 m²

Bed: twin - 120x200 cm

Room facilities: walk-in rain shower, smart TV, Nespresso machine, unlimited still and sparkling water, Botaniq toiletries, bathrobe, hairdryer, slippers, safe, iron, ironing board, minibar



[Click for 3D](#)



[Click for 3D](#)

Contemporary Superior King

42 rooms on the first six floors of the hotel with a street view

Room size: 24-40 m²

Bed: king - 180x200 cm

Room facilities: walk-in rain shower or bath tub, smart TV, Nespresso machine, unlimited still and sparkling water, Botaniq toiletries, bathrobe, hairdryer, slippers, safe, iron, ironing board, minibar

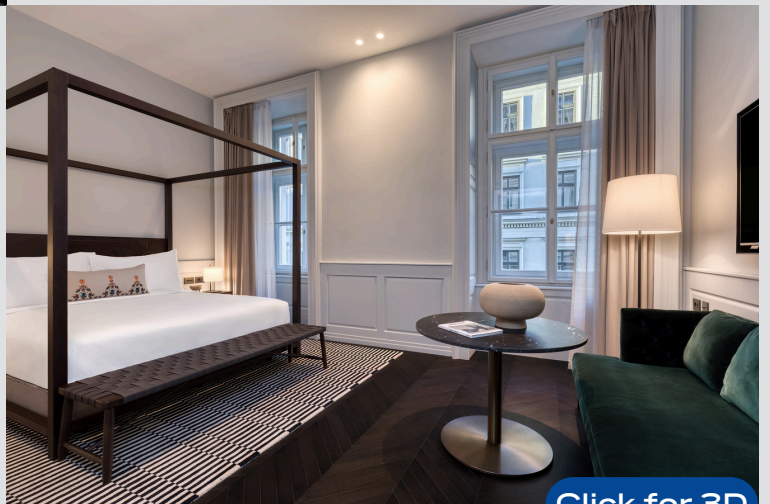
Heritage Superior King

59 rooms on the first four floors of the hotel with a street view

Room size: 31-40 m²

Bed: king - 180x200 cm

Room facilities: walk-in rain shower, smart TV, Nespresso machine, unlimited still and sparkling water, Botaniq toiletries, bathrobe, hairdryer, slippers, safe, iron, ironing board, minibar



[Click for 3D](#)

SUITES



[Click for 3D](#)

Heritage Studio Suite

1 room on the first floor of the hotel with a street view

Room size: 44 m²

Bed: king - 180x200 cm

Room facilities: walk-in rain shower, smart TV, Nespresso machine, unlimited still and sparkling water, living room, Botaniq toiletries, bathrobe, hairdryer, slippers, safe, iron, ironing board, minibar

Contemporary Studio Suite

23 rooms on the first seven floors of the hotel with a street view

Room size: 24-40 m²

Bed: king - 180x200 cm

Room facilities: walk-in rain shower or bath tub, smart TV, Nespresso machine, unlimited still and sparkling water, living room, Botaniq toiletries, bathrobe, hairdryer, slippers, safe, iron, ironing board, minibar



[Click for 3D](#)



[Click for 3D](#)

Contemporary Junior Suite

9 rooms on the fifth floor of the hotel with a street view

Room size: 40-47 m²

Bed: king - 180x200 cm

Room facilities: walk-in rain shower or bath tub, smart TV, Nespresso machine, unlimited still and sparkling water, living room, Botaniq toiletries, bathrobe, hairdryer, slippers, safe, iron, ironing board, minibar

Atrium Suite

5 rooms from the second to the sixth floors of the hotel with a balcony and view to Pavilon Restaurant & Bar

Room size: 50 m²

Bed: king - 180x200 cm

Room facilities: separate living room, walk-in rain shower and bath tub, smart TV, Nespresso machine, unlimited still and sparkling water, Botaniq toiletries, bathrobe, hairdryer, slippers, safe, iron, ironing board, minibar



[Click for 3D](#)

SUITES



[Click for 3D](#)

Contemporary Twin Suite

1 room on the seventh floor of the hotel with a balcony and city view

Room size: 65 m²

Bed: twin - 120x200 cm

Room facilities: separate living room, walk-in rain shower and bath tub, smart TV, Nespresso machine, unlimited still and sparkling water, Botaniq toiletries, bathrobe, hairdryer, slippers, safe, iron, ironing board, minibar

Contemporary Suite

2 rooms on the seventh floor of the hotel with a balcony and city view

Room size: 50 m²

Bed: king 180x200 cm

Room facilities: separate living room, walk-in rain shower and bath tub, smart TV, Nespresso machine, unlimited still and sparkling water, Botaniq toiletries, bathrobe, hairdryer, slippers, safe, iron, ironing board, minibar



[Click for 3D](#)



[Click for 3D](#)

Executive Suite

1 room on the seventh floor of the hotel with a balcony and Danube view

Room size: 80 m²

Bed: king - 180x200 cm

Room facilities: separate living room, walk-in rain shower and bath tub, smart TV, Nespresso machine, unlimited still and sparkling water, Botaniq toiletries, bathrobe, hairdryer, slippers, safe, iron, ironing board, minibar

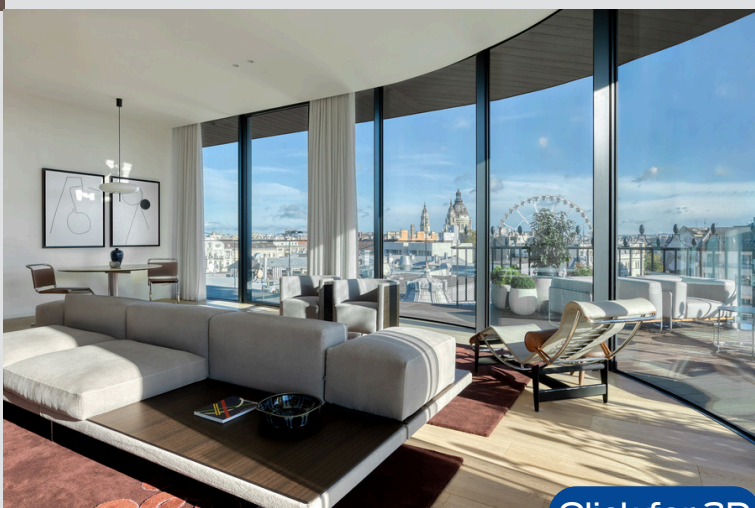
Presidential Suite

1 room on the seventh floor of the hotel with a wraparound terrace and Budapest view

Room size: 162 m²

Bed: king - 180x200 cm

Room facilities: separate living room, dining area, kitchen, walk-in wardrobe, walk-in rain shower and bath tub, 2 smart TV, Nespresso machine, unlimited still and sparkling water, Botaniq toiletries, bathrobe, hairdryer, slippers, safe, iron, ironing board, minibar



[Click for 3D](#)